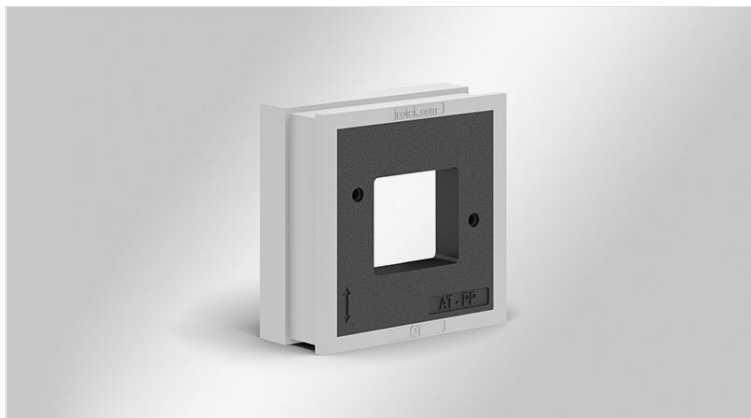


# QT-AT-PP adapter grommets

based on QT large, for PushPull connection technology / IP54



The grommet QT-AT-PP is constructed on the basis of a large QT cable grommet. The polyamide body is moulded with elastomer.

The cut-out enables a screw assembly of all compact connector housings based on the PushPull device connection technology.

The insertion of QT-AT-PP into an icotek cable entry frame enables the routing of cables with and without connectors in combination with the creation of interfaces for PushPull connectors within one cable entry system. Separate cut-outs for connectors are no longer necessary.

QT-AT-PP provides ingress protection of up to IP54.

IP54

HL3  
EN 45545-2

ECOLAB  
certified

UV  
ISO 4892-2A

RoHS  
compliant

REACH  
COMPLIANCE

Made in  
Germany

## Specifications

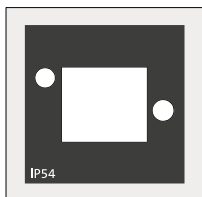
<b>IP rating (EN 60529)</b>	IP54
<b>Material</b>	Elastomer Body: Polyamide
<b>Flame class</b>	UL94-V0, self-extinguishing
<b>Operating temperature</b>	-40 C° to 100 C°
<b>Properties</b>	silicone free, halogen free

## Advantages & benefits

- By utilising the QT-AT-PP grommet, connectors can be integrated directly into the cable entry frame
- Separate cut-outs for connectors are no longer necessary
- Space-saving solution
- Grommet is suitable for PushPull housings
- Cost-saving assembly

## Product types & sizes

QT-AT-PP



Part No.	<b>42602</b>
EAN	<b>4251269323010</b>
Package quantity	<b>10</b>
Length	<b>40 mm</b>
Width	<b>39 mm</b>
Height	<b>17 mm</b>
Mounting height	<b>2 mm</b>

**icotek**<sup>®</sup>  
smart cable management